

BALDOR® • RELIANCE 

Product Information Packet

IDNM3534

.33HP,1750RPM,3PH,60HZ,56C,3512M,TENV,F1

Part Detail							
Revision:	J	Status:	PRD/A	Change #:		Proprietary:	No
Type:	AC	Elec. Spec:	35WGN563	CD Diagram:	CD0005	Mfg Plant:	
Mech. Spec:	35T995	Layout:	35LYT995	Poles:	04	Created Date:	09-17-2012
Base:	RG	Eff. Date:	04-20-2020	Leads:	9#18		

Specs			
Catalog Number:	IDNM3534	Inverter Code:	Inverter Duty
Enclosure:	TENV	KVA Code:	M
Frame:	56C	Lifting Lugs:	No Lifting Lugs
Frame Material:	Steel	Locked Bearing Indicator:	Locked Bearing
Output @ Frequency:	.330 HP @ 60 HZ	Motor Lead Quantity/Wire Size:	9 @ 18 AWG
Synchronous Speed @ Frequency:	1800 RPM @ 60 HZ	Motor Lead Exit:	Ko Box
Voltage @ Frequency:	230.0 V @ 60 HZ	Motor Lead Termination:	Flying Leads
	460.0 V @ 60 HZ	Motor Type:	3512M
XP Class and Group:	None	Mounting Arrangement:	F1
XP Division:	Not Applicable	Power Factor:	70
Agency Approvals:	UR	Product Family:	General Purpose
	CSA	Pulley End Bearing Type:	Ball
Auxillary Box:	No Auxillary Box	Pulley Face Code:	C-Face
Auxillary Box Lead Termination:	None	Pulley Shaft Indicator:	Standard
Base Indicator:	Rigid	Rodent Screen:	None
Bearing Grease Type:	Polyrex EM (-20F +300F)	RoHS Status:	ROHS COMPLIANT
Blower:	None	Shaft Extension Location:	Pulley End
Current @ Voltage:	.550 A @ 460.0 V	Shaft Ground Indicator:	No Shaft Grounding

	1.100 A @ 230.0 V	Shaft Rotation:	Reversible: Connected Standard
Design Code:	B	Shaft Slinger Indicator:	No Slinger
Drip Cover:	No Drip Cover	Speed Code:	Single Speed
Duty Rating:	CONT	Motor Standards:	NEMA
Electrically Isolated Bearing:	Not Electrically Isolated	Starting Method:	Direct on line
Feedback Device:	NO FEEDBACK	Thermal Device - Bearing:	None
Front Face Code:	Encoder/Feedback Device	Thermal Device - Winding:	Normally Closed Thermostat
Front Shaft Indicator:	None	Vibration Sensor Indicator:	No Vibration Sensor
Heater Indicator:	No Heater	Winding Thermal 1:	None
Insulation Class:	H	Winding Thermal 2:	None

Nameplate NP1162L	
CAT NO	IDNM3534
SPEC.	35T995N563G1
FRAME	56C HP .33 TE
VOLTS	230/460
MAG CUR	.8/.4 FLA 1.1/.55
RPM	1750 RPM MAX 6000
HZ	60 PH 3 CLASS H
SER.F.	1.00 DES B SL HZ 1.7
NEMA-NOM-EFF	80 WK2 0.077
BLWR V	PH HZ A
RATING	40C AMB-CONT
DE BRG	6205 ODE BRG 6203
CC	SN

Parts List		
Part Number	Description	Quantity
SA251176	SA 35T995N563G1	1.000 EA
RA238018	RA 35T995N563G1	1.000 EA
NS2512A01	INSULATOR, CONDUIT BOX X	1.000 EA
35CB3007	35 CB CASTING W/.88 DIA. LEAD HOLE	1.000 EA
36GS1000SP	GASKET-CONDUIT BOX, .06 THICK #SV-330 LE	1.000 EA
51XB1016A07	10-16 X 7/16 HXWSSLD SERTYB	2.000 EA
11XW1032G06	10-32 X .38, TAPTITE II, HEX WSHR SLTD U	1.000 EA
35EP3122K01	K00 W/SH ENC CVR	1.000 EA
HW5100A03	WAVY WASHER (W1543-017)	1.000 EA
35EP3307F00	MASTER DE,205 BRG,.998SH,#26 DRN	1.000 EA
51XN1032A20	10-32 X 1 1/4 HX WS SL SR	2.000 EA
35FH4801G	THRU-SHAFT ENCODER COVER INV/VECTOR F1 &	1.000 EA
WD4129	1.50 X 1.50 GRAY SNAP IN PLUG PROMOULD #	2.000 EA
10XN2520A08	1/4-20X1/2 HEX HEAD CAP	4.000 EA
10XN2520A08	1/4-20X1/2 HEX HEAD CAP	1.000 EA
35CB4521GX	CONDUIT BOX LID KIT **ORDER INDIV PARTS	1.000 EA
51XW0832A07	8-32 X .44, TAPTITE II, HEX WSHR SLTD SE	4.000 EA
HW2501D13	KEY, 3/16 SQ X 1.375	1.000 EA
HA7000A04	KEY RETAINER 0.625 DIA SHAFTS	1.000 EA
MJ5004A05	#242-21 LOCTITE GENERAL PURPOSE MED. STR	0.005 EA
85XU0407S04	4X1/4 U DRIVE PIN STAINLESS	2.000 EA
MJ1000A02	GREASE, MOBIL POLYREX EM - 124047	0.050 LB
MG1000G27	MED CHARCOAL METALLIC GREY 400-0096	0.017 GA
HA3100A12	THRUBOLT 10-32 X 7.375	4.000 EA

Parts List (continued)		
Part Number	Description	Quantity
LB1119N	WARNING LABEL	1.000 EA
LC0145B01	CONNECTION LABEL	1.000 EA
NP1162L	SS INV UL CSA CC	1.000 EA
36PA1000	PKG GRP, PRINT PK1016A06	1.000 EA
MN416A01	TAG-INSTAL-MAINT no wire (1200/bx) 3/19	1.000 EA
PE-0000001	ZRTG PE ASSEMBLY	1.000 EA
FE-0000001	ZRTG FE ASSEMBLY	1.000 EA



AC Induction Motor Performance Data

Record # 39802

Typical performance - not guaranteed values

Winding: 35WGN563	Type: 3513M	Enclosure: TENV
--------------------------	--------------------	------------------------

Nameplate Data			General Characteristics at 460 V, 60 Hz: High Volt Connection		
Rated Output (HP)	.33		Full Load Torque	0.991 LB-FT	
Volts	230/460		Start Configuration	DOL	
Full Load Amps	1.1/.55		Break Down Torque	4.16LB-FT	
R.P.M.	1750		Pull-Up Torque	2.53 LB-FT	
Hz	60	Phase	3	Locked-rotor Torque	3.05 LB-FT
NEMA Design Code	B	KVA Code	M	Starting Current	4.29 Amps
Service Factor	1		No-load Current	0.389 Amps	
NEMA Nom. Eff.	80	P.F.	70	Line-line Res. @ 25°C.	54.013 Ohms
Rating - Duty	40C AMB-CONT		Temp. Rise @ Rated Load	45°C	
S.F. Amps			Temp. Rise @ S.F. Load		

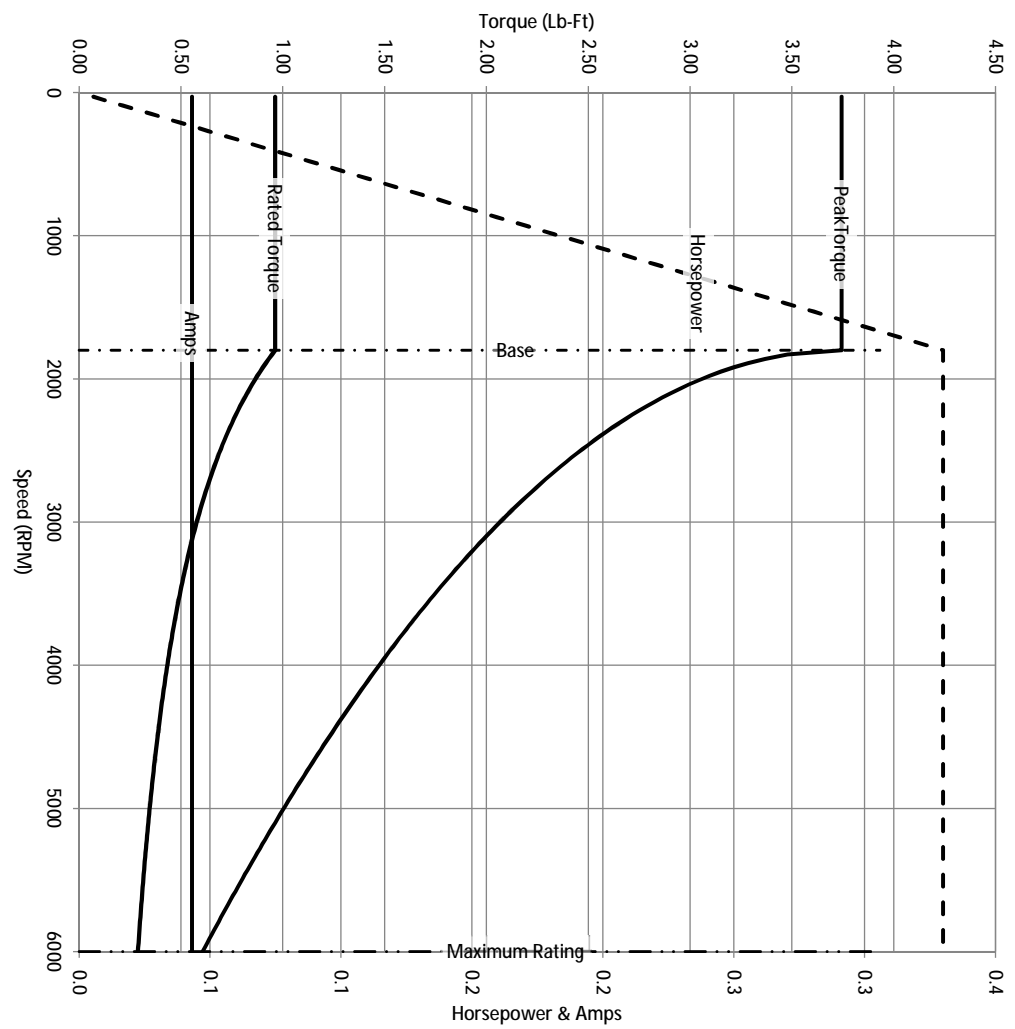
Load Characteristics at 460 Volts, 60 Hz, 0.33 HP

% of Rated Load	25	50	75	100	125	150	S.F.
Power Factor	32	47	60	70	76	81	
Efficiency	61.6	73.8	78.5	80.2	80.4	79.9	
Speed	1786.6	1775.9	1764.4	1752.5	1739.3	1723.7	
Line Amperes	0.405	0.444	0.489	0.554	0.631	0.719	

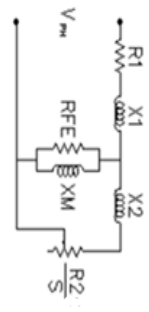
Baldor Electric Company Fort Smith, Arkansas



Catalog	IDNM3534	NP VOLTS	230/460	ENCLOSURE	TENV	WYE CONN EQ CRT OHMS PER PHASE (BASE RATING, 20C)
FRAME	56C	NP AMPS	1.1/.55	Base Volts	460	R1 26.400 X1 28.880
HP	0.33 HP	DUTY	Cont	Base AMPS	0.554	R2 13.800 X2 16.783
BASE SPEED	1800	MAX SAFE RPM	6000	Slip Hz	1.57	XM1 663.430
PHASE/HZ	3/60	AMB ⁰ /TNSUL	40/H	WK ² (lb-ft ²)	0.0768	



Remarks: Calculated Data



BALDOR DR BY ENR
 CK BY
 APP BY ENR
 DATE 3/4/2013

A MEMBER OF THE ABB GROUP

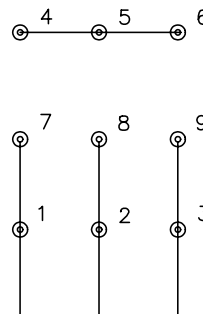
A-C MOTOR
 PERFORMANCE CURVES
 35T995N563G1
 ISSUE DATE 3/4/2013



CD0005

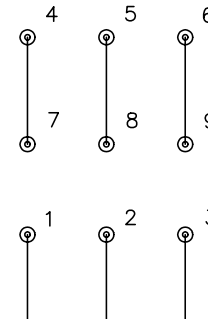


LOW VOLTAGE
(2Y)



LINE

HIGH VOLTAGE
(1Y)



LINE

NOTES:

1. INTERCHANGE ANY TWO LINE LEADS TO REVERSE ROTATION.
2. OPTIONAL THERMOSTATS ARE PROVIDED WHEN SPECIFIED.
3. ACTUAL NUMBER OF INTERNAL PARALLEL CIRCUITS MAY BE A MULTIPLE OF THOSE SHOWN ABOVE.
4. LEAD COLORS ARE OPTIONAL. LEADS MUST ALWAYS BE NUMBERED AS SHOWN.

REV. DESC: REVISE TO SHOW OPTIONAL COLORS			
REV. LTR: E	BY: JLP	REVISED: 01/19/99 10:15	TDR: 0171435
900000		FILE: AAA00005140	MDL: -
		MTL: -	

BALDOR ELECTRIC Co.

3PH, DV, 9 LEADS

CD0005